

ALL-O-MATIC



Power Door Products

(914) 698-5083

www.PowerDoorProducts.com

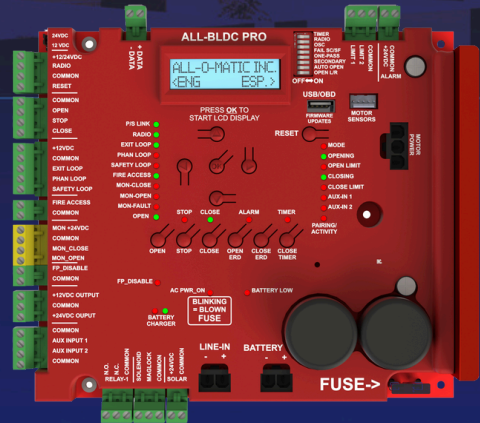
allomatic.net

SL-45DC PRO

SLIDE GATE OPERATOR

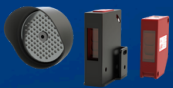


ALL-BLDC PRO CONTROL BOARD



ALL-BLDC PRO FEATURES

- ✓ LCD DISPLAY WITH ON BOARD DIAGNOSTICS
- ✓ AUTO CLOSE TIMER & OBSTRUCTION SENSING DIGITAL ADJUSTMENTS
- ✓ INTEGRATED WIRELESS PRIMARY/SECONDARY
- ✓ PARTIAL OPEN OPTION
- ✓ PROGRAMMABLE AUXILIARY INPUTS
- ✓ USB PORT TO EXTRACT DIAGNOSTIC DATA AND FIRMWARE UPDATES
- ✓ BUILT-IN VOLT METER THROUGH LCD DISPLAY
- ✓ CYCLE COUNTER AND MUCH MORE



AOM-RED EYE
INCLUDED



BACK DRIVABLE
GEARBOX



RESIDENTIAL

SLIDERS | SWINGERS | OVERHEADS

The standard by which all other automatic gate operators are measured.

SCAN FOR
PRODUCT
INFORMATION



UL 325 2018
COMPLIANT

UL 991
COMPLIANT

CSA C22.2 #247

ALL-O-MATIC



818-787-1988

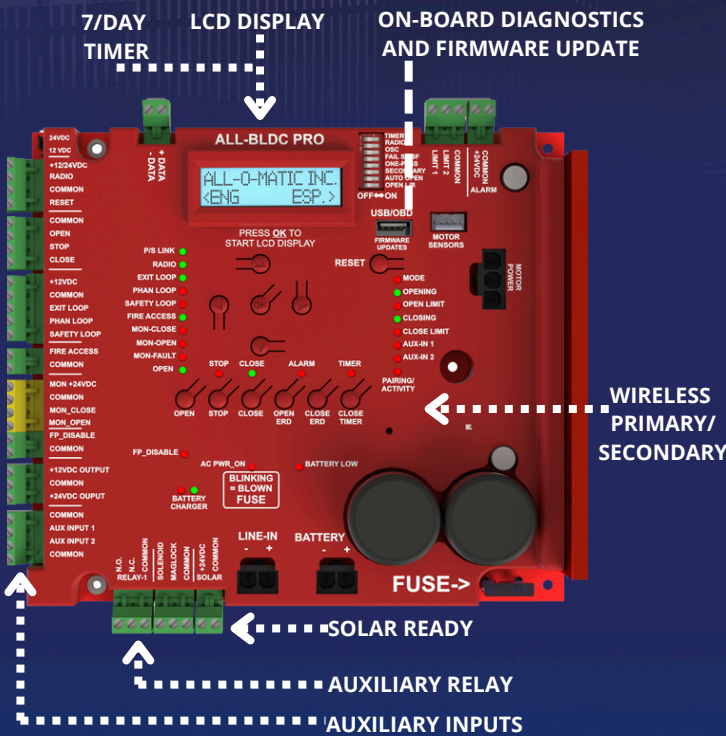
allomatic.net



SCAN FOR
PRODUCT
INFORMATION

SL-45DC PRO SPECS

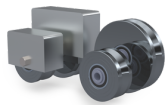
SLIDE GATE OPERATOR



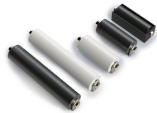
- Max Gate Weight** 800 lbs.
- Max Gate Length** 30 feet
- Warranty** 5 year residential
- Motor** 24 VDC brushless with planetary gearbox
- Gate Speed** Adjustable 6"-12" per second
- Power Options** 115/230 VAC single phase and 24 VDC solar panel
- Duty Cycle** Intermittent
- Battery Backup** Integrated, with (2) 7Ah 12VDC batteries
- Battery Backup Capacity** 250 cycles on a 600 lb. gate
- Temperature Range** -40 to 160°
- Gearbox Ratio** Approx. 24:1
- Width X Length X Height** 11" X 14.5" X 15.5"
- Shipping Weight** 60 lbs.
- Emergency Release** Push open in the event of a power failure
- Main Sprocket Size** 41B15X5/8
- Chain Size** 41NP (20' included)
- Gearbox Sprocket** 41B10X5/8
- Limit Shaft Sprocket** 41B10X5/8
- Breaker Requirement** 20 amp dedicated



AVAILABLE ACCESSORIES



V-Groove
Wheels



GUIDE
Rollers



Fire
Boxes



24V
Solar
Panel



Goosenecks

The Warrantor warrants the SL-45DC PRO Gate Operator. ALL-O-MATIC INC warrants its gate openers for a period of five (5) years in residential installation to be free from defects in circuitry, motor, gear box and workmanship. This warranty applies from the date of purchase to the original owner. Warrantor will repair or, at its option, replace any device which it finds to require service. This device must be sent to the warrantor at the consumer's expense. The warrantor will return the repaired or replaced unit to the customer at the consumer's expense. Labor charges for dealer service or replacement are the responsibility of the owner. These warranties are in lieu of all other warranties either expressed or implied, and ALL-O-MATIC INC shall not be liable for consequential damage. All implied warranties of merchantability and or fitness for a particular purpose are hereby disclaimed and excluded. This limitation is not valid in jurisdictions which do not allow limitation of incidental or consequential damages or limitation of warranty periods. Caution in order to obtain this policy, please complete the registration card and send it by mail within 30 days of purchasing from ALL-O-MATIC INC. or your INSTALLER. If not registered only a one year warranty on all parts will be provided.

The standard by which all other automatic gate operators are measured.

UL 325 2018 COMPLIANT UL 991 COMPLIANT

CSA C22.2 #247